

# Louisiana Statewide Transportation Plan

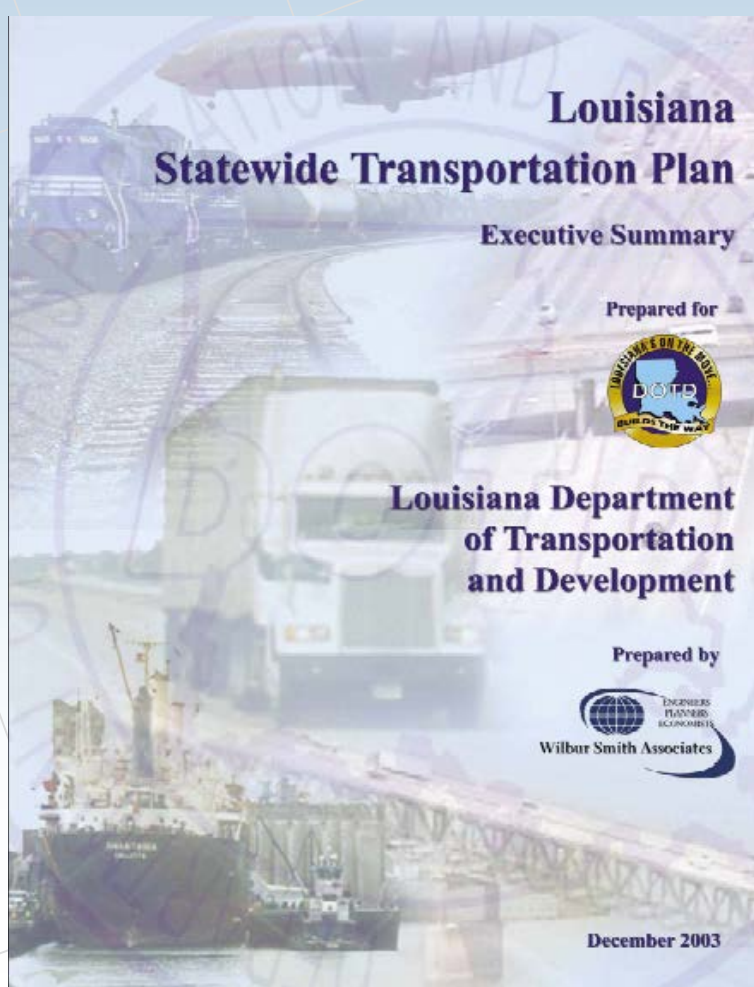


## *Review of Previous Policy Committee Meetings*

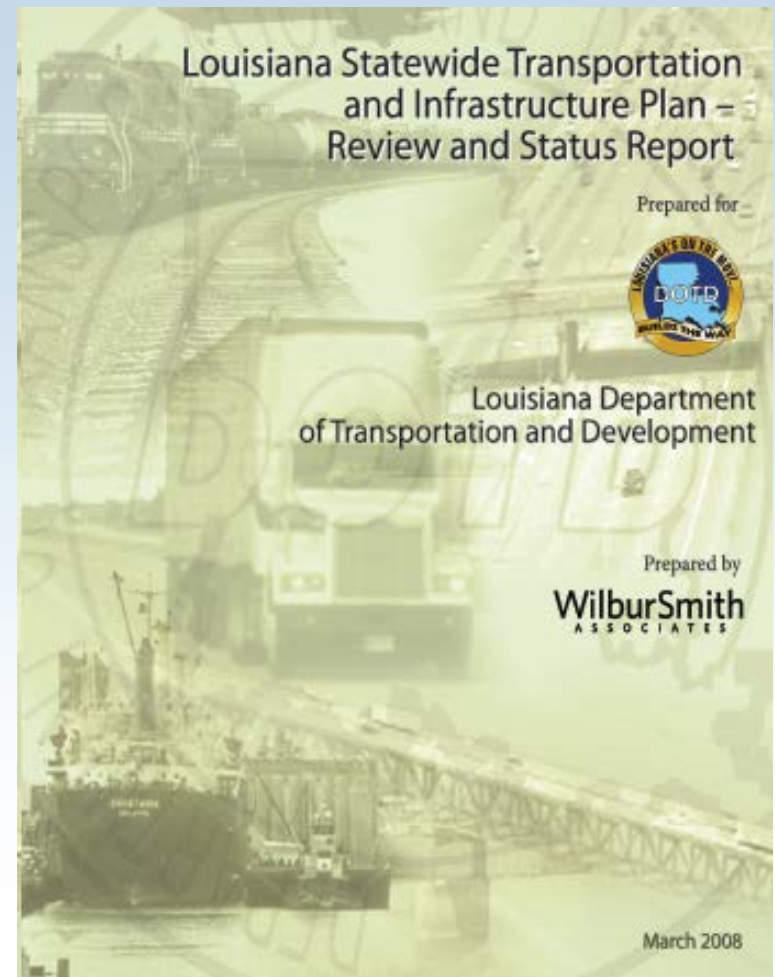
November 19, 2015

**CDM  
Smith**

## Current Plan adopted in 2003

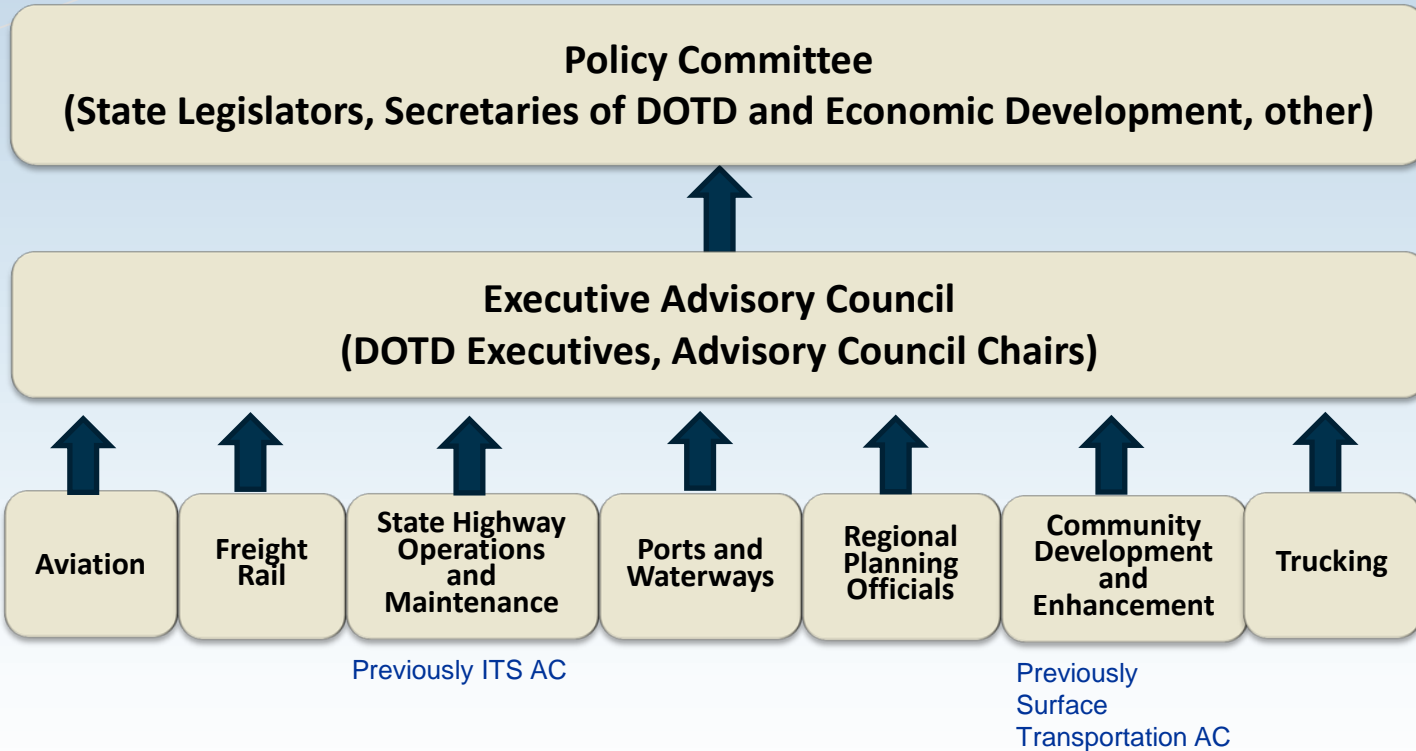


## Review and Status Report in 2008



Covers all modes – freight and passenger. Economic growth is a major driver.

# Decision-Making Process



# Policy Committee

- Senate President John Alario
- Senator Robert Adley
- Senator Mike Walsworth
- House Speaker Chuck Kleckley
- Representative Karen St. Germain
- Representative Stephen Pugh
- DOTD Secretary Sherri LeBas – *Policy Committee Chair*
- LED Secretary Steven Grissom
- Robert Scott, President, Public Affairs Research Council

## Duties:

- Serve as the final decision-making body for the update of the Louisiana Statewide Transportation Plan;
- Establish priorities among transportation-related, economic development projects and/or services;
- Advise other members of the Legislature, local elected officials, public and private agencies, companies, groups, and individuals on transportation issues pertaining to policies, regulations, programs, projects, and funding.

# Meeting Summaries

## 1<sup>st</sup> Meeting [March 13, 2014]

- Overview of Planning Process
- Presentation of Vision, Goals, Objectives and Performance Measures

## 2<sup>nd</sup> Meeting [April 24, 2014]

- Approved Vision, Goals, Objectives and Performance Measures
- Presentation of Draft Plan recommended by the Executive Advisory Council
  - Policy Recommendations
  - Megaprojects
  - Budget Allocation
- Discussion of Draft Plan Elements

# Meeting Summaries, Cont'd.

## 3<sup>rd</sup> Meeting [May 28, 2014]

- **Presentation of Draft Plan recommended by the Executive Advisory Council**
  - Funding Scenarios
  - Megaprojects
  - Policy Recommendations
  - Budget Allocation
- **Discussion of Draft Plan Elements**

## 4<sup>th</sup> Meeting [July 9, 2014]

- **Presentation of Draft Plan recommended by the Executive Advisory Council**
- **Approved revisions to wording of 3 Plan Elements and moved one megaproject from Priority C to Priority B**
- **Discussed adding one additional Plan Element**

# 4th Meeting Discussion Points

- **Revised Recommendations**
  - Add *“Provide a minimum of \$70 million in state TTF annually to match federal funds for the sustainability of state highway pavements and bridges.”* to the Plan Elements under State Highway Operations and Maintenance.
- **Funding Scenarios** – Describe funding scenarios in terms of dollar amounts irrespective of state funding sources.

# Meeting Summaries, Cont'd.

## 5<sup>th</sup> Meeting [June 12, 2015]

- **Review of the development and content of the Draft Statewide Transportation Plan**
- **Review of other states' funding for ports and waterways improvements**
- **Policy Committee approval to proceed with the formal Public Involvement procedures for the Draft Statewide Transportation Plan**



# Draft Plan Comment/Response Summary

# Summary - Public Comments Received on Draft Plan

- **Total of 22 submittals – See Comment Summary handout**
- **15 comments related to Megaproject 9a (Houma-Thibodaux N-S Connector to LA 3127) – request to move from “B” to “A”**
- **Megaproject 8b (LA 1 South, Golden Meadow – Leeville) – request to move from “B” to “A”**
- **Recommendation for more funding dedicated to megaprojects throughout the state – El Camino, etc.**
- **Bicycle / Pedestrian issues**
- **Various editorial comments on text in the Plan document at several locations**

# Policy Committee Mtg. Public Comment

# Discussion/Consideration of Adoption

# Closing Comments

Thank you!



<http://www.dotd.la.gov/study/>